

EngineMonitorMini

Display unit for industrial engines
with J1939 interface

EngineMonitorMini

Product Overview

The EngineMonitorMini is a display and monitoring device for industrial engines with CAN-bus interface. Common messages to the SAE J1939 standard are supported.

The CAN messages transmitted from the engine are evaluated in the EngineMonitorMini and displayed. The integrated fault diagnosis allows the discovery of possible errors of the engine (e.g. broken wire speed sensor). Thus, conventional analog or digital display instruments can be replaced or retrofitted.



Illustration 1: Exemplary Illustration of data shown on the display

Folgende Informationen werden dargestellt:

Page 1

Engine Speed

Engine Coolant Temperature

Engine Oil Pressure

Page 2

Engine Coolant Temperature

Battery Potential (Voltage)

Engine Instantaneous Fuel Economy

Engine Total Hours of Operation

Page 3

Engine Percent Load at Current Speed

Actual Engine Percent Torque

Accelerator Pedal Position

Page 4

Error Codes (DM1)

EngineMonitorMini

Display unit for industrial engines
with J1939 interface

Hardware specification

Protocol

- SAE J1939 – ISO 11898 – HighSpeed-CAN / 5V Basis / 250 kBaud

Dimensions (W x H x D)

- 87,5 x 87,5 x 37,7 mm

Display

- TFT LCD Color-Display, 57,6 x 43,2 mm (active area), 2,8" diagonal

Protection class

- IP 67 (at the front in assembled state, otherwise IP 65)

Operating temperature

- 20 ... +70°C

Storage temperature

- 30 ... +80°C

Operating voltage

- 8...31 V DC

Power consumption

- 70 mA (at 24 V DC)

Supported Industrial engines

- Caterpillar®
- Cummins®
- Daimler®
- Deutz®
- Perkins®
- Scania®
- VolvoPenta®
- FPT

Exemplary Illustrations



Illustration 2: Engine Speed, Engine Coolant Temperature and Engine Oil Pressure

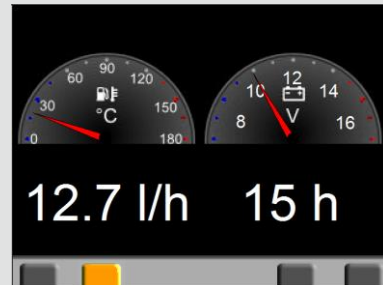


Illustration 1: Engine Fuel Rate/Temperature, Battery Potential (Voltage) and Engine Hours

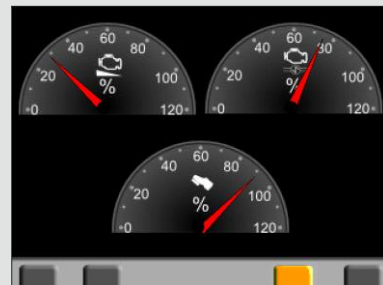


Illustration 2: Engine Percent Load at Current Speed, Actual Engine Percent Torque and Accelerator Pedal Position

Order information

Name	Bestellnummer	Beschreibung
EngineMonitorMini	B12200-EMM-001-0451	EngineMonitorMini
CANPowerSupply	B12090-CPS-002-0500	M12 cable socket straight, 500 cm 4pole CAN-cord with 120 Ohm resistor (further lengths available)